

Company Profile





*K.W. Kim*

( )

1989 3 17

1918

「가」

NC

( )

AS

TURNING ROLL LD-POSITIONER

가 /

TOTAL SUPPLIER

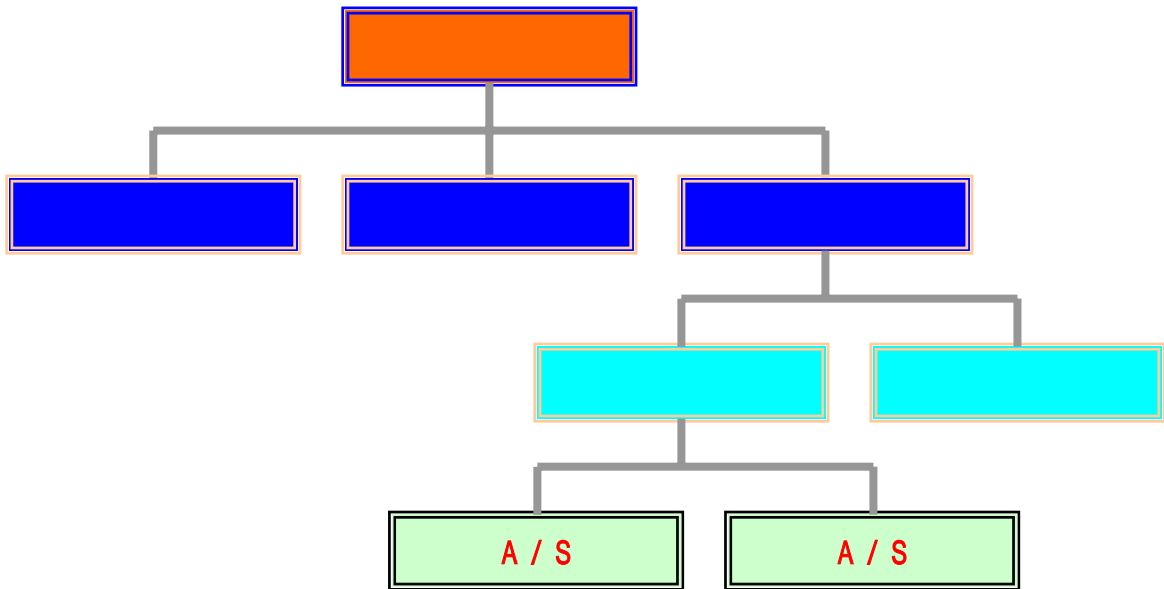
( )



Your partner in cutting and welding  
Koike Korea Engineering Co., Ltd.

KOIKE KOREA ENGINEERING CO., LTD  
1988 9 22

1318-26  
TEL 054)439-3711 2, 3714 5  
FAX 054)439-3211 054)439-3713  
URL <http://www.koike.co.kr>  
E-mail [webmaster@koike.co.kr](mailto:webmaster@koike.co.kr)  
26



KOIKE SAN SO KOGYO CO., LTD. ( )  
KOIKE ARONSON INC. ( )  
KOIKE EUROPE BV. ( )





1988. 09	IK-12MAX PORTABLE IK-600C SHAPE GAS CUTTING MACHINE IK-1500G SHAPE & CNC GAS CUTTING MACHINE IK-3000C SHAPE & CNC GAS CUTTING MACHINE
1990. 06	IK-2500G SHAPE & CNC GAS CUTTING MACHINE IK-2500CE SHAPE & CNC GAS CUTTING MACHINE WELDING POSITIONER
1991. 07	IK-1200J SHAPE GAS CUTTING MACHINE
1994. 11	ECONOGRAPH CNC CUTTING MACHINE
1995. 04	2
1996. 08	
1997. 07	LEADGRAPH CNC CUTTING MACHINE
1998. 05	TURNING ROLL
2002. 12	
2003. 04	
2003. 05	VERSAGRAPH-6000DXI 3DP





SHAPE GAS CUTTING MACHINE

CNC GAS CUTTING MACHINE

CNC PLASMA CUTTING MACHINE

WELDING POSITIONER

TURNING ROLL

PORTABLE GAS CUTTING MACHINE

PORTABLE WELDING CARRIAGE

CAD / CAM SOFTWARE

KAP-8030N (KOIKE SANSO JAPAN)

KAPS (KOIKE KOREA- )

LANTEK EXPERT (LENTEK KOREA)

K-PRIMA (PRIMA 21C)

